

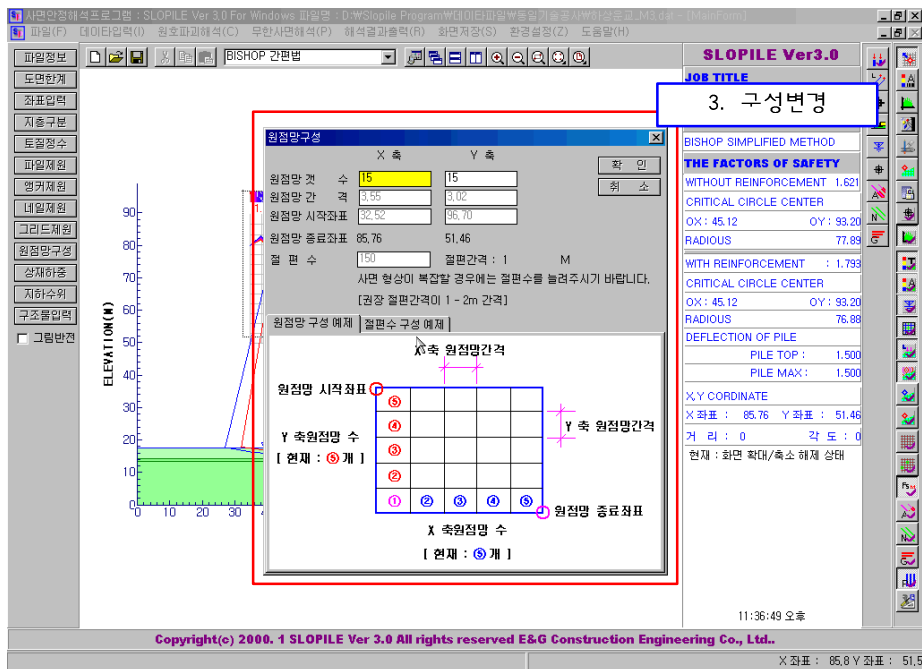
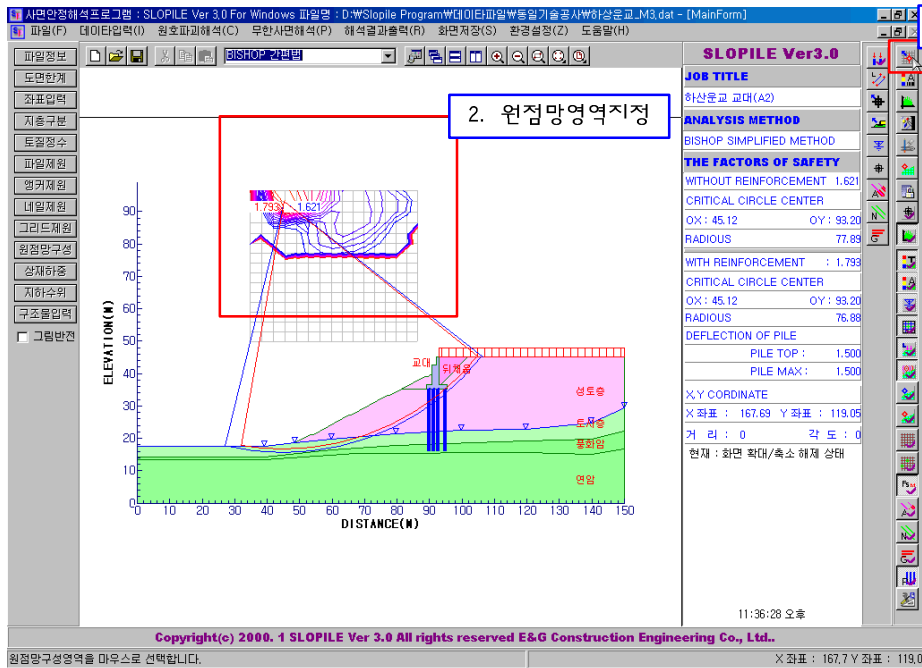
15. 단축툴바 구성 I

SLOPILE Ver 3.0 For Windows 프로그램의 단축툴바에서는 각종 옵션설정을 할 수 있다.



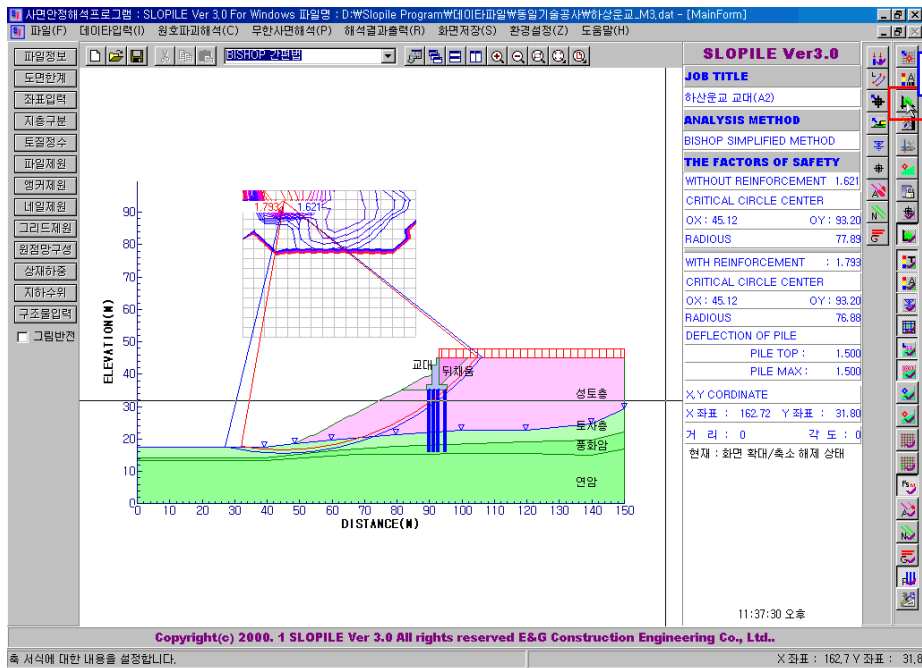
여기서는 단축아이콘을 클릭하면서 발생하는 이벤트에 대해서만 간략하게 설명드리고 자세한 내용은 이미 설명된 내용을 참조하시기 바랍니다. 이전에 설명되지 않은 내용은 여기서 설명하겠습니다.

1) 원점망구성

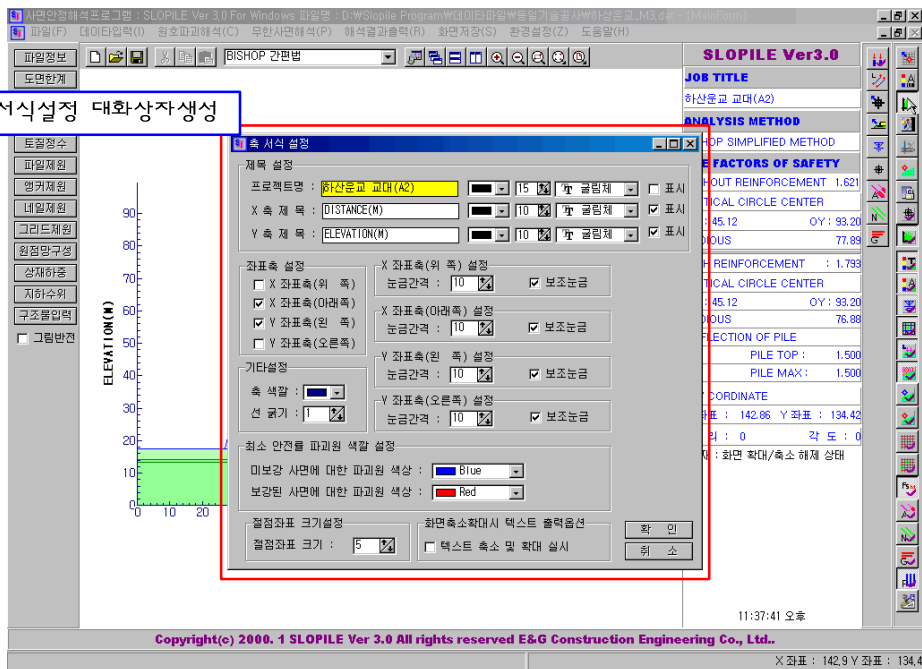




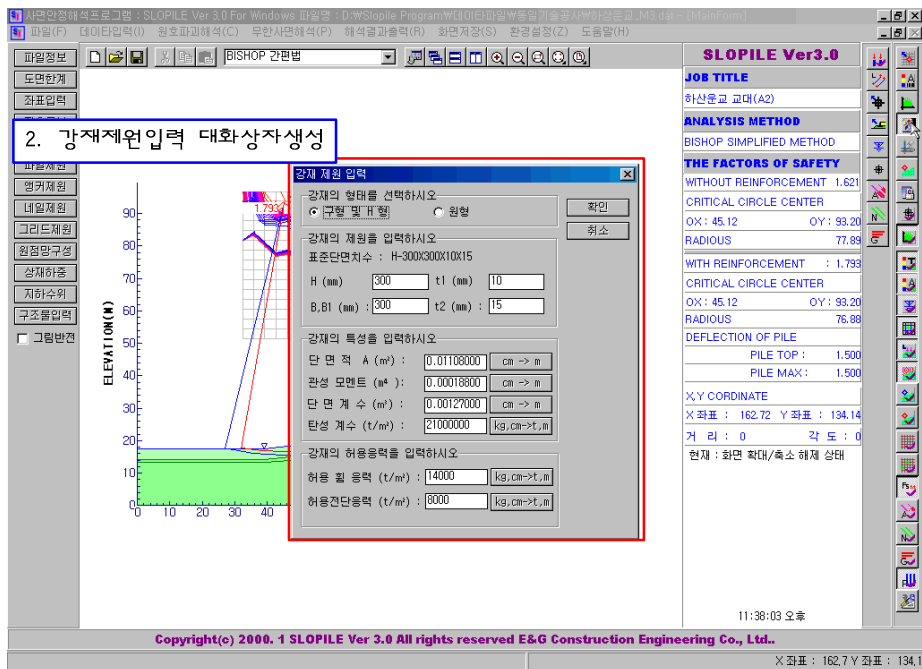
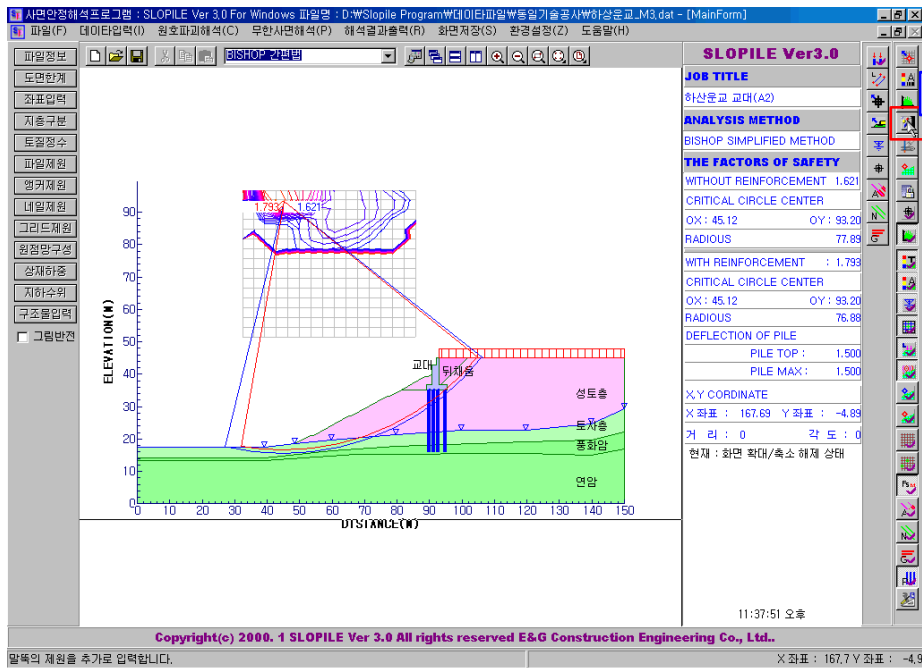
3) 축설정



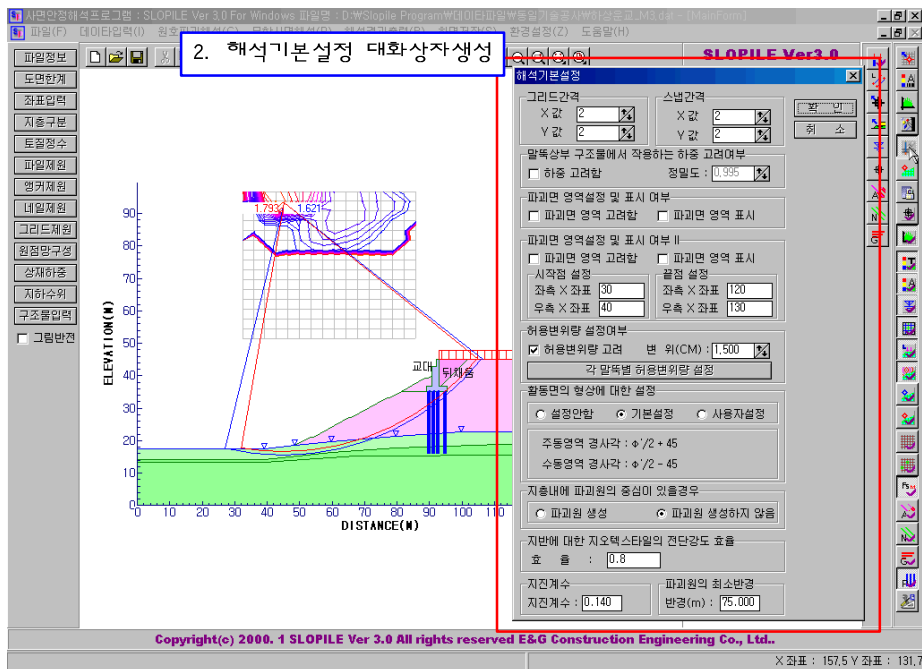
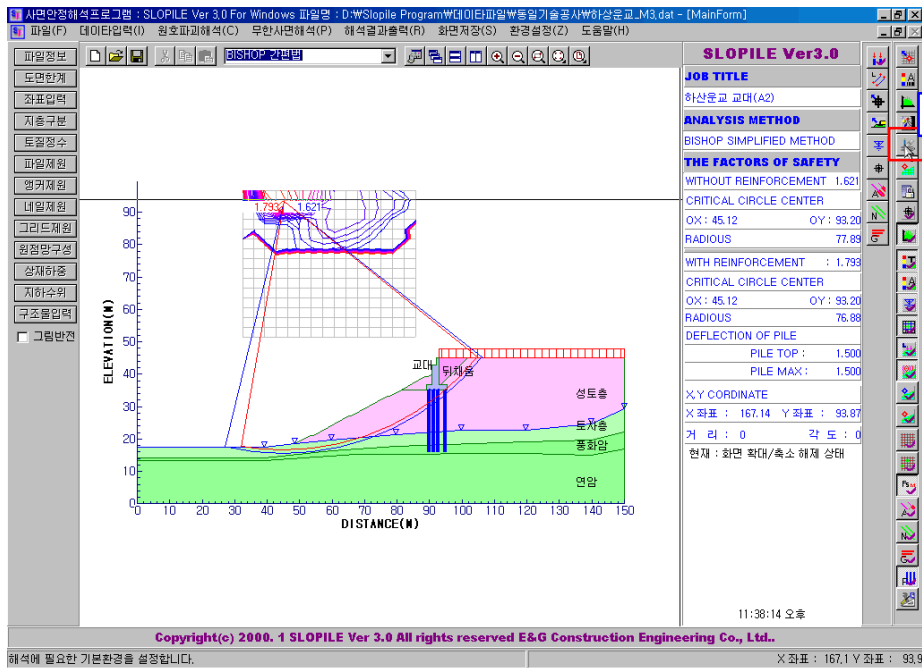
2. 축서식설정 대화상자 생성



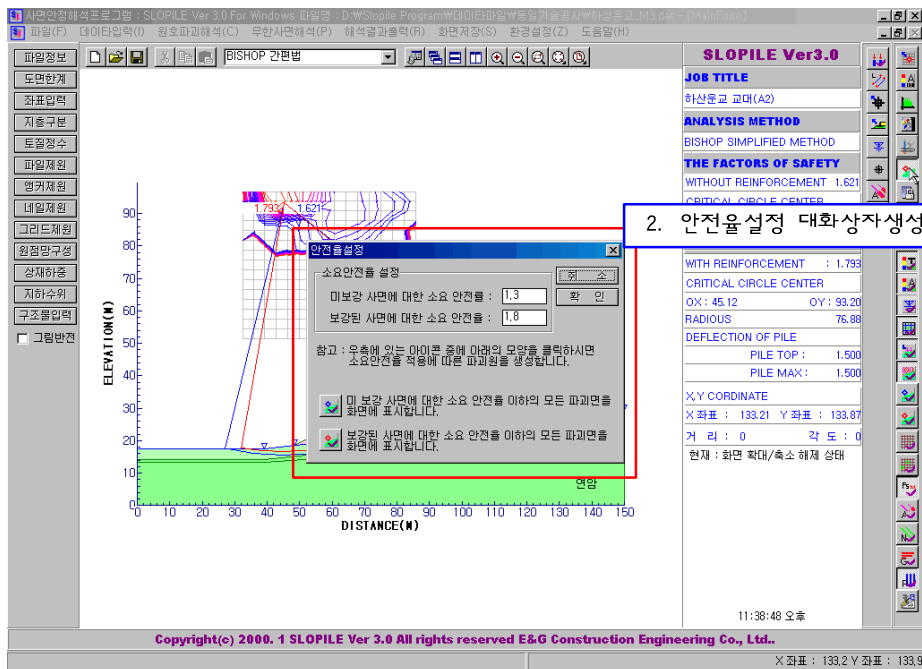
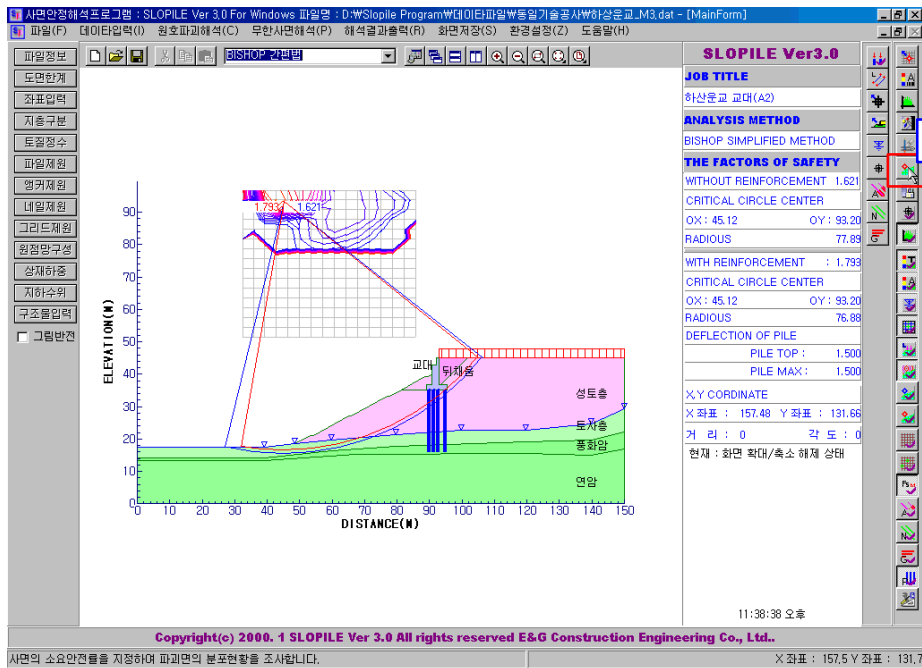
4) 강재제원입력



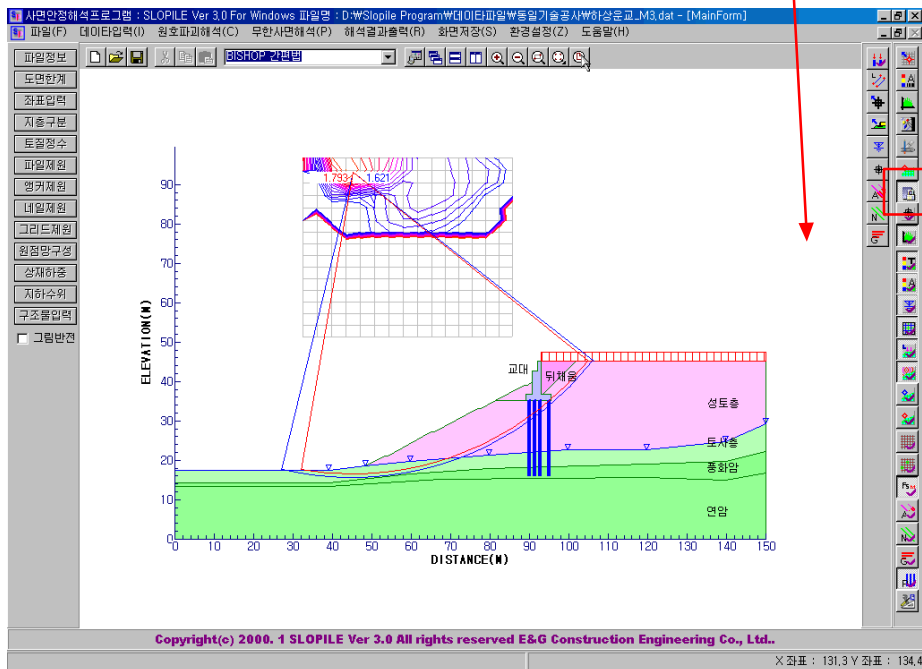
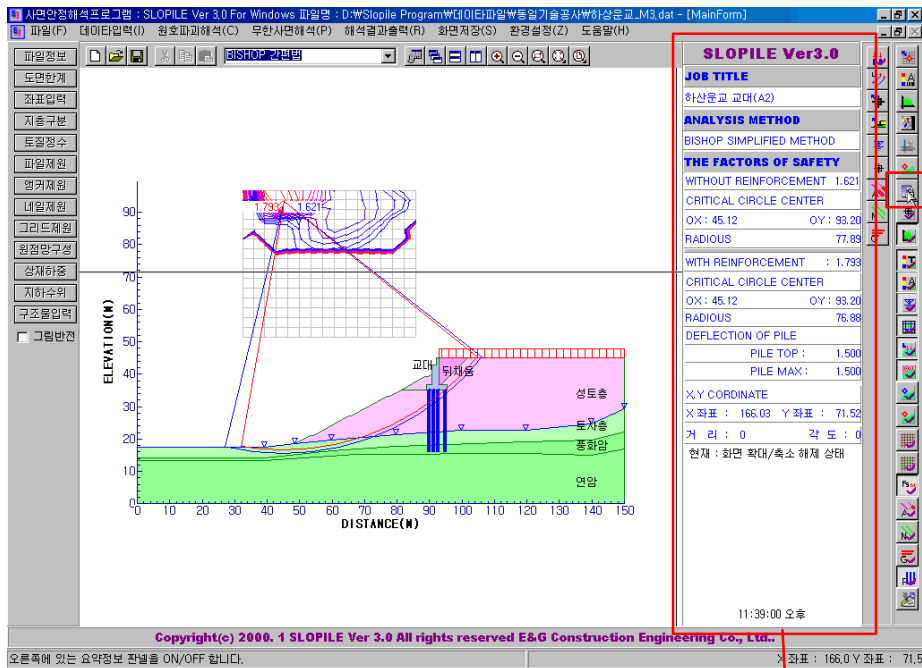
5) 해석기본설정



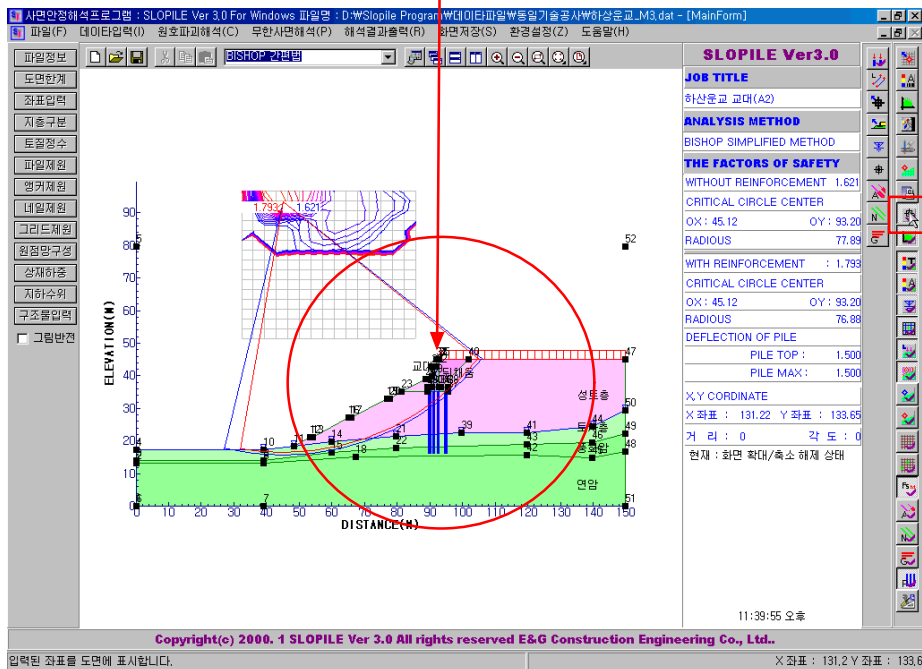
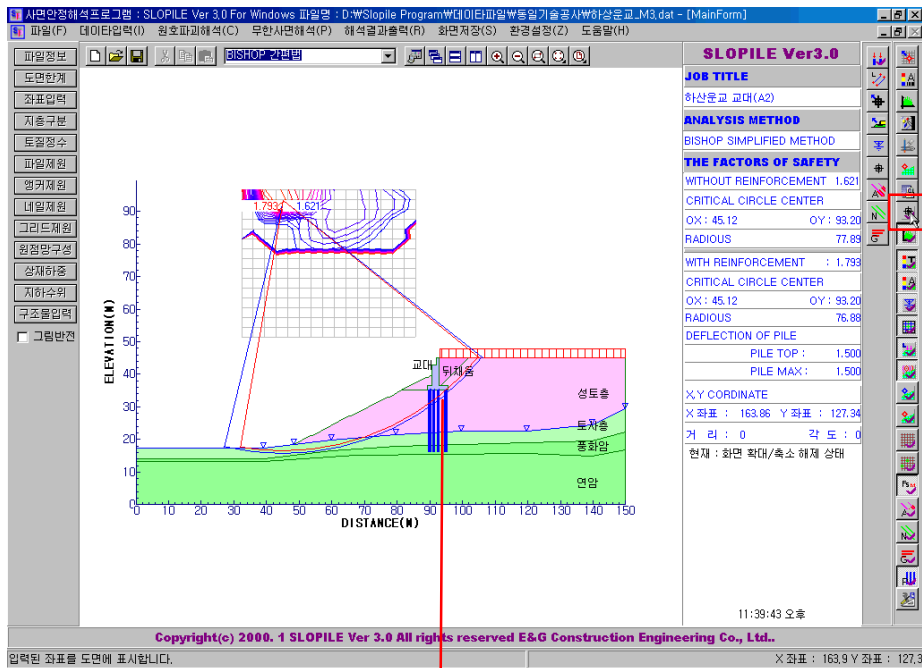
6) 기준안전율설정



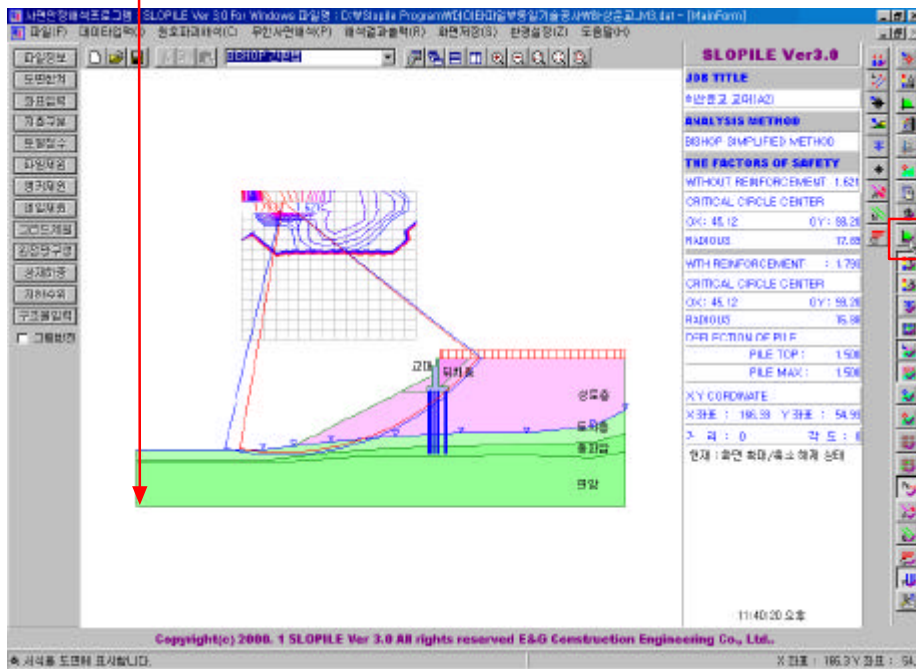
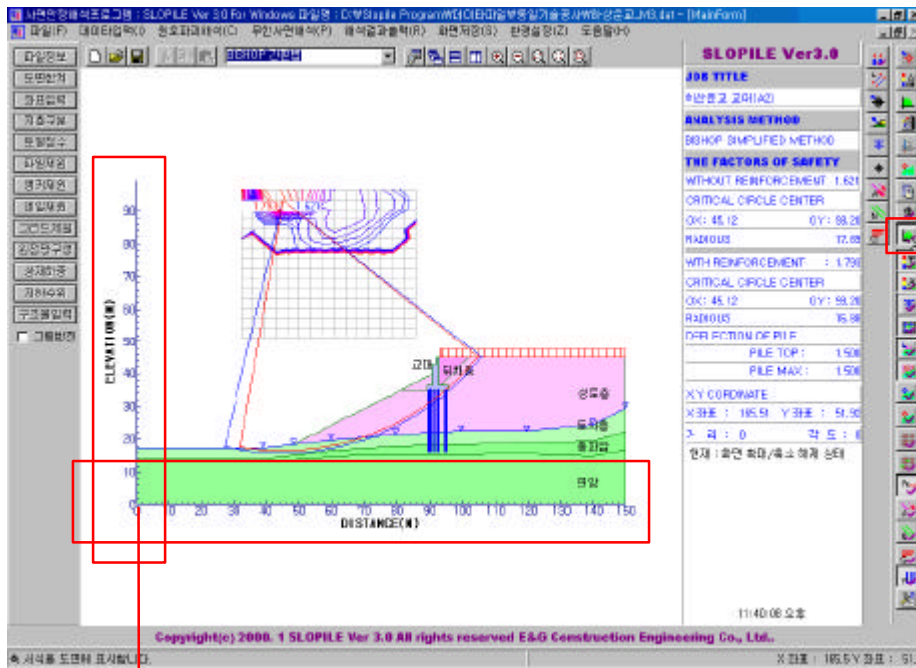
7) 정보판넬



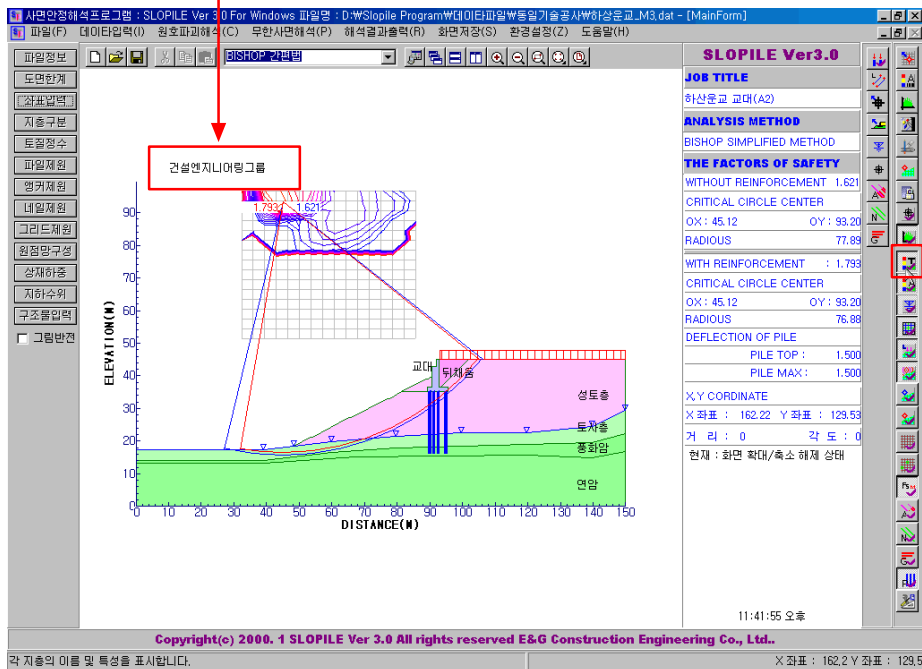
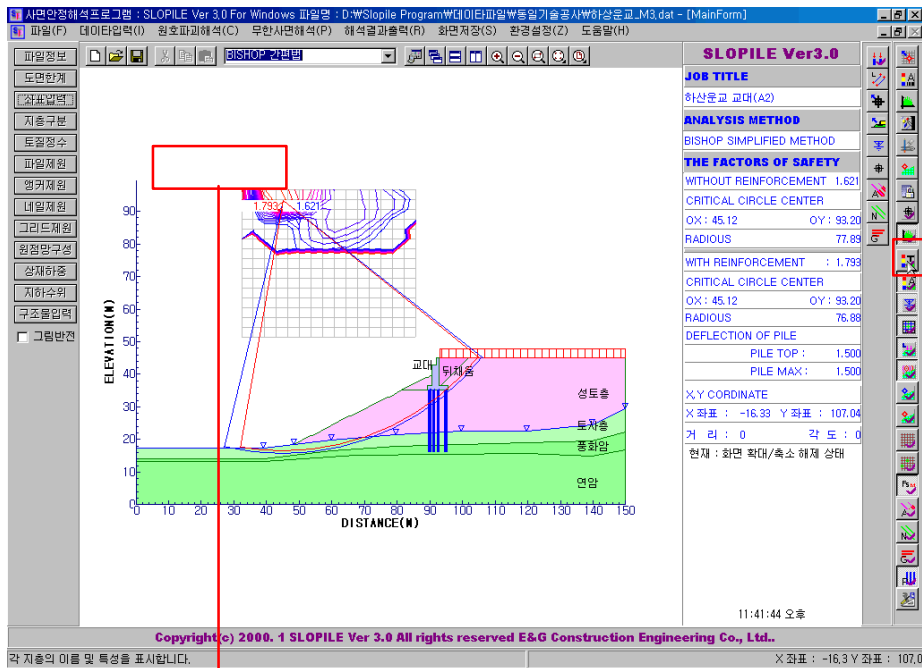
8) 절점좌표



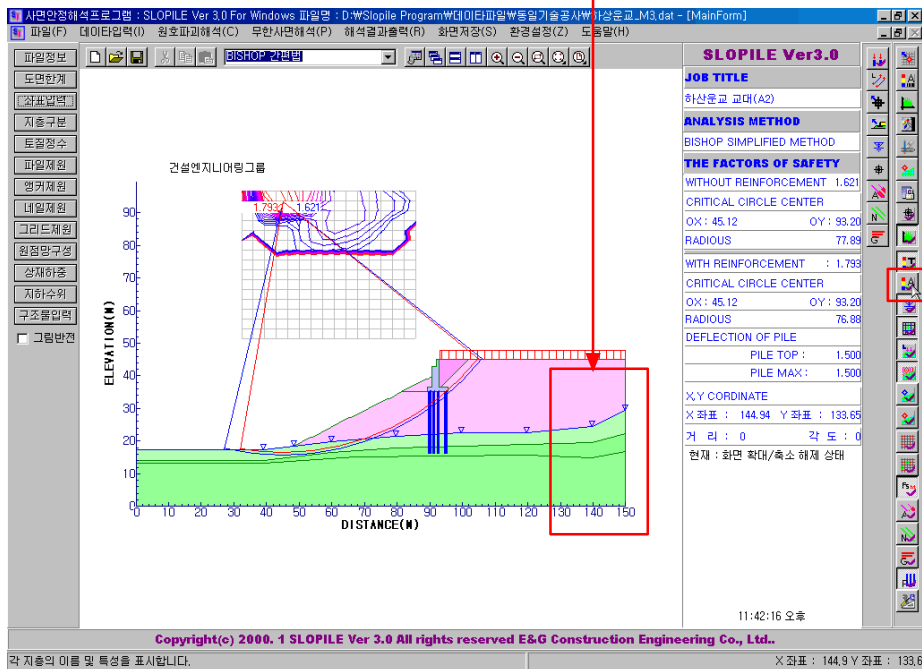
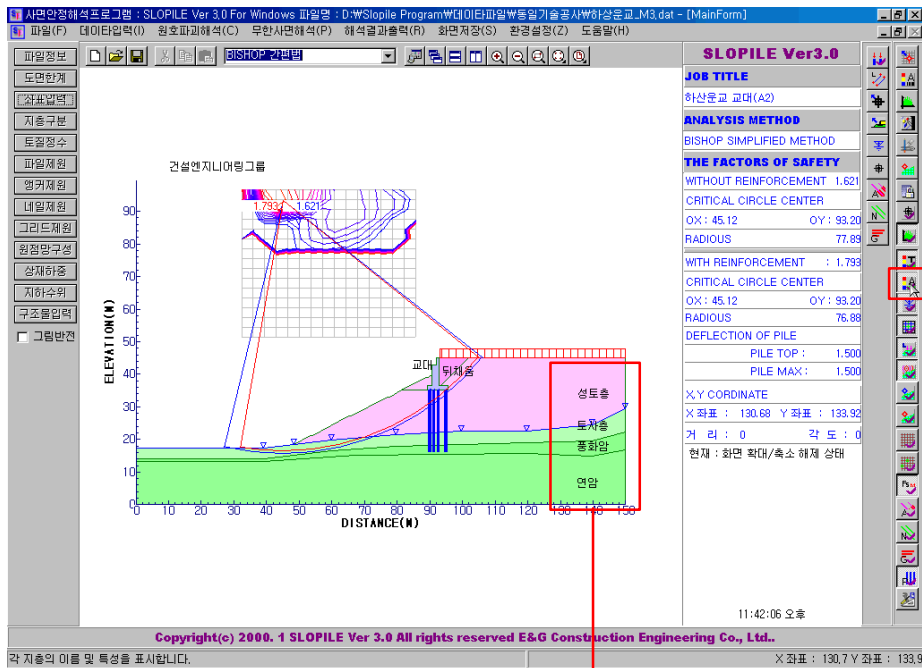
9) 축설정



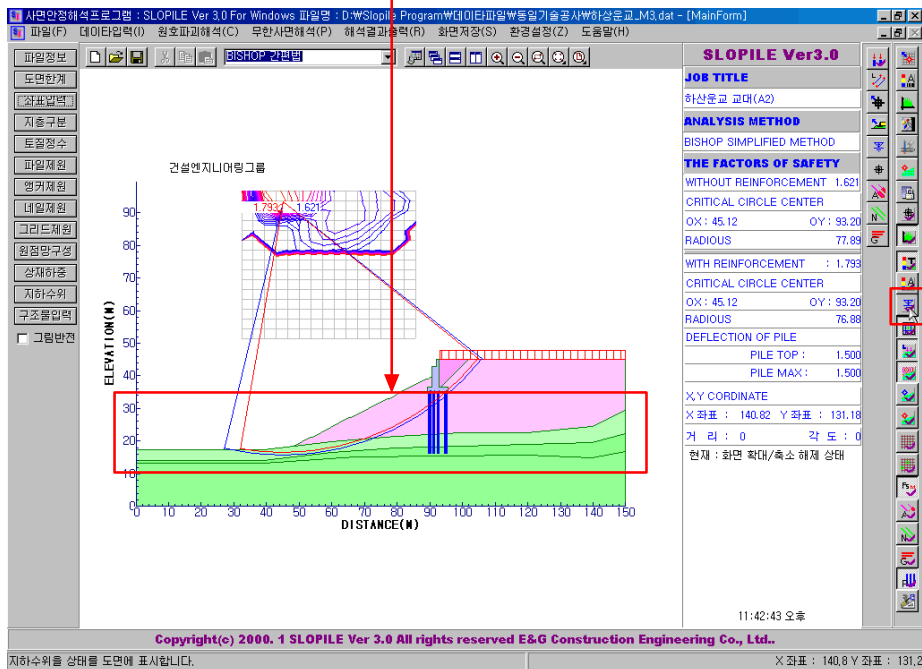
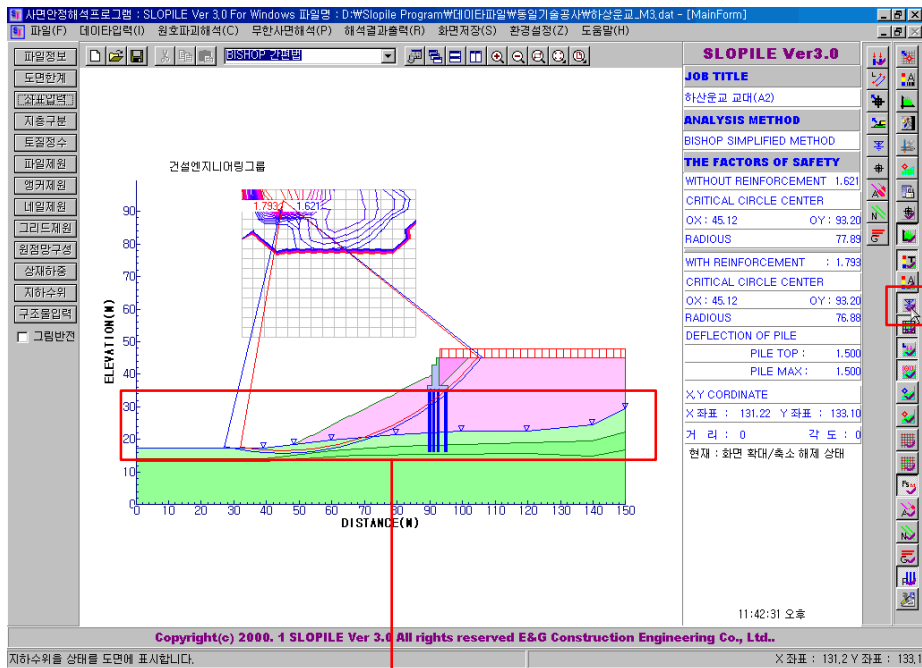
10) 절점텍스트



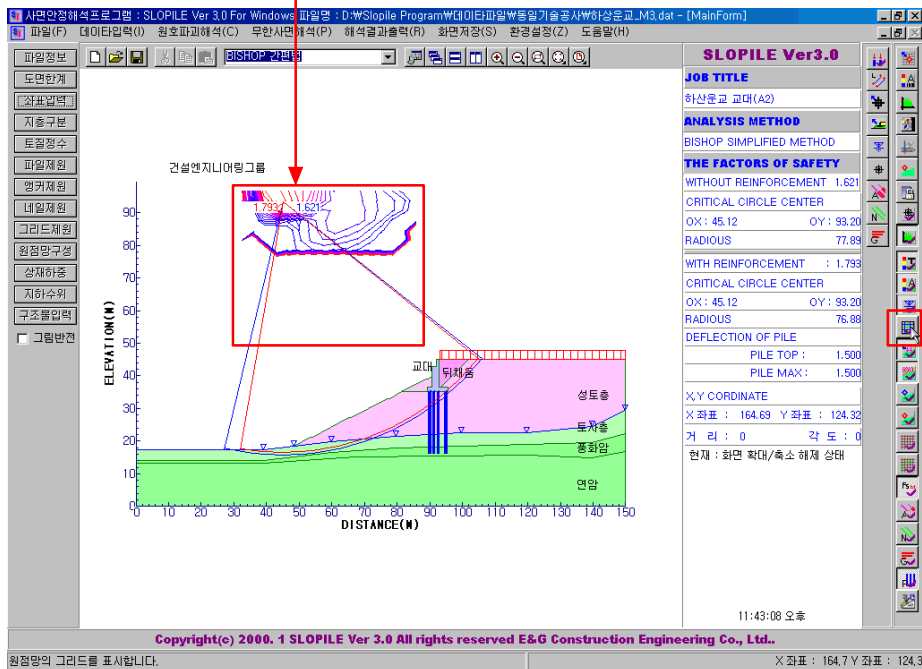
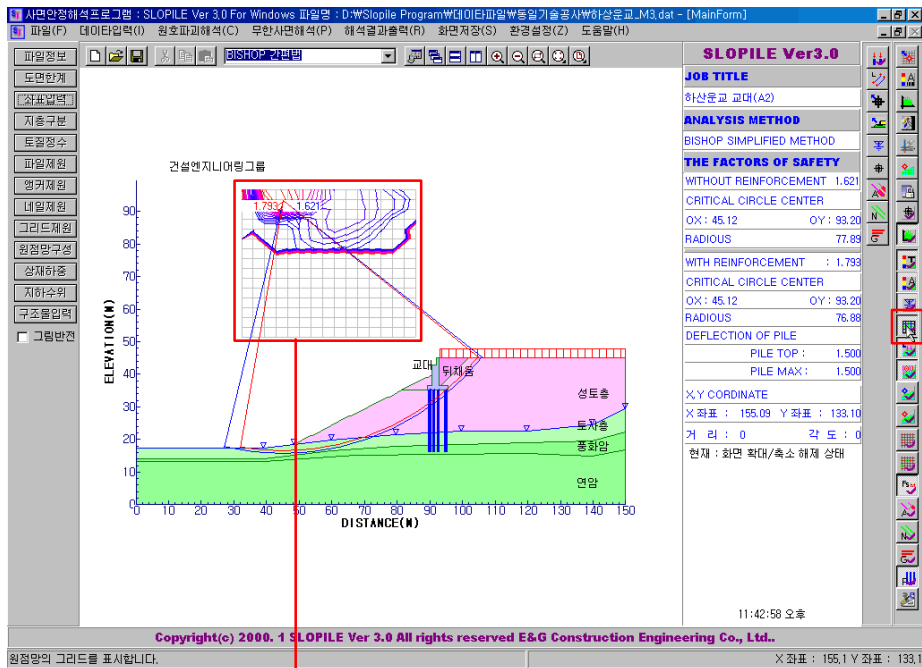
11) 지층명



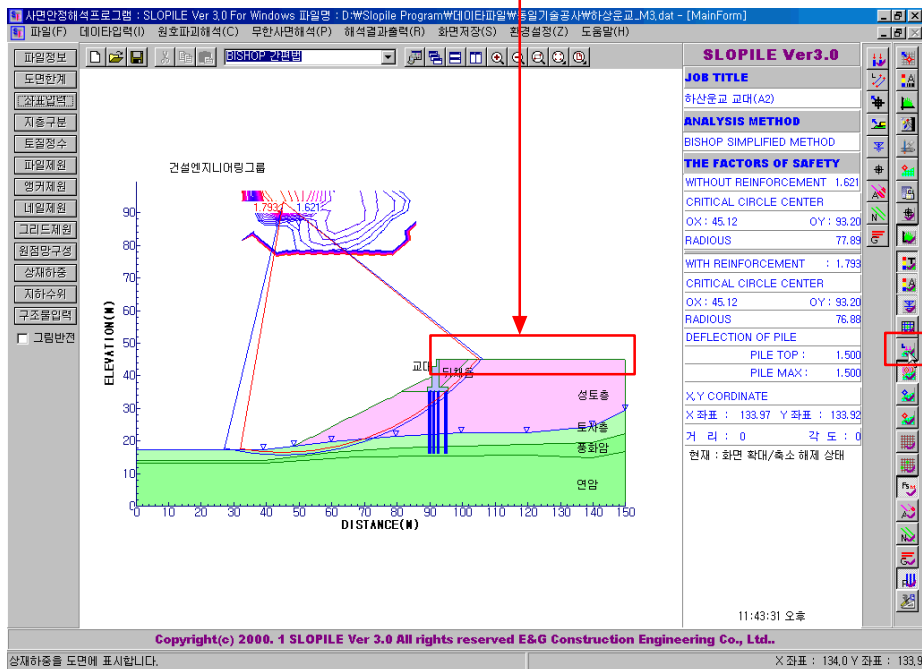
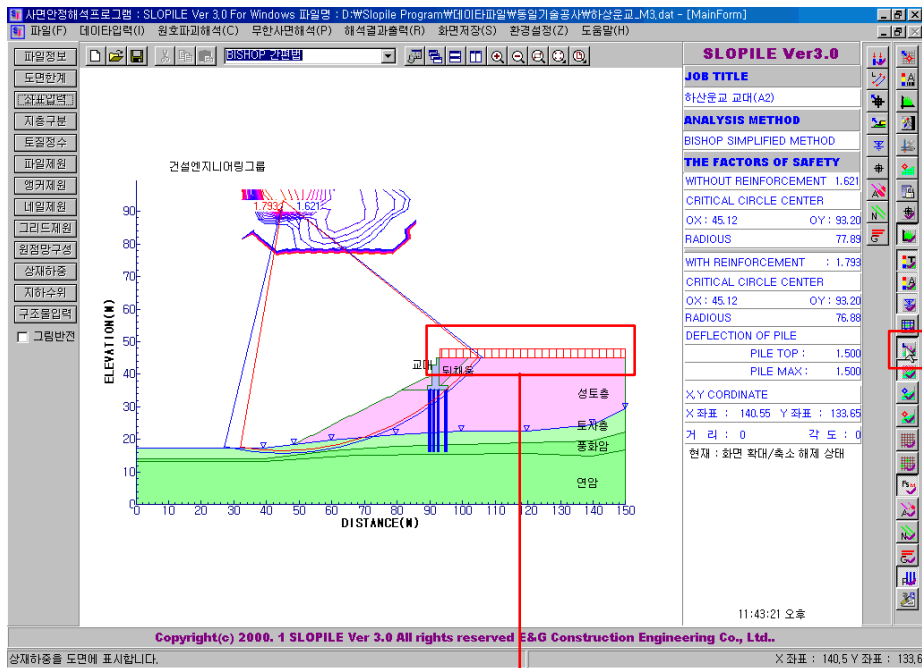
12) 지하수위



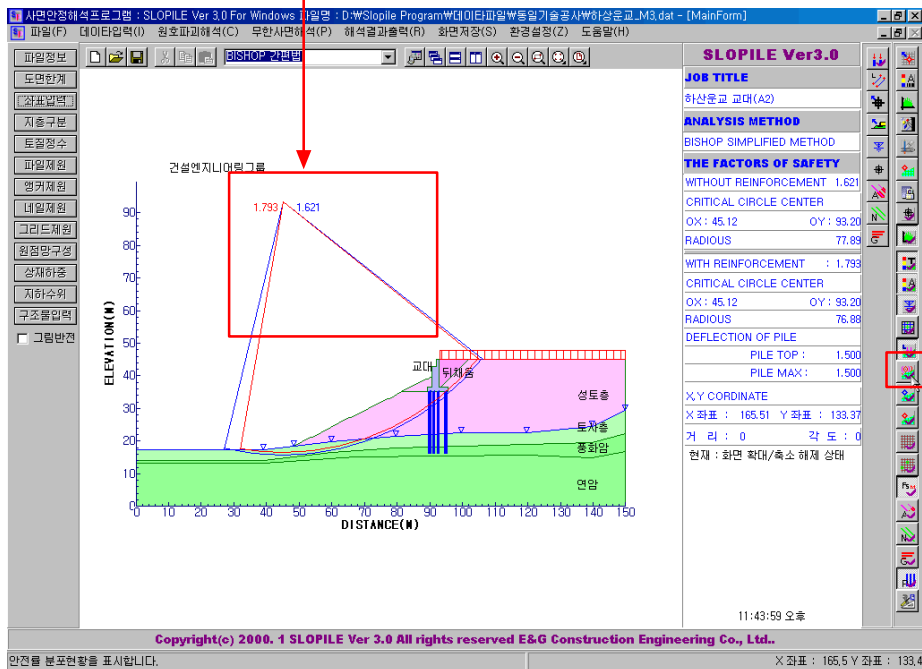
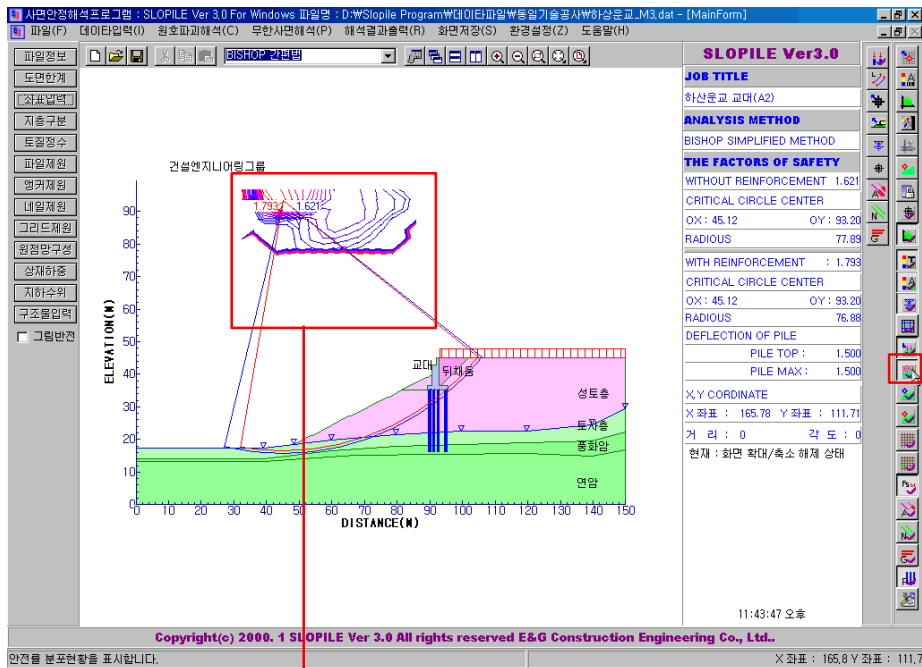
13) 원점망



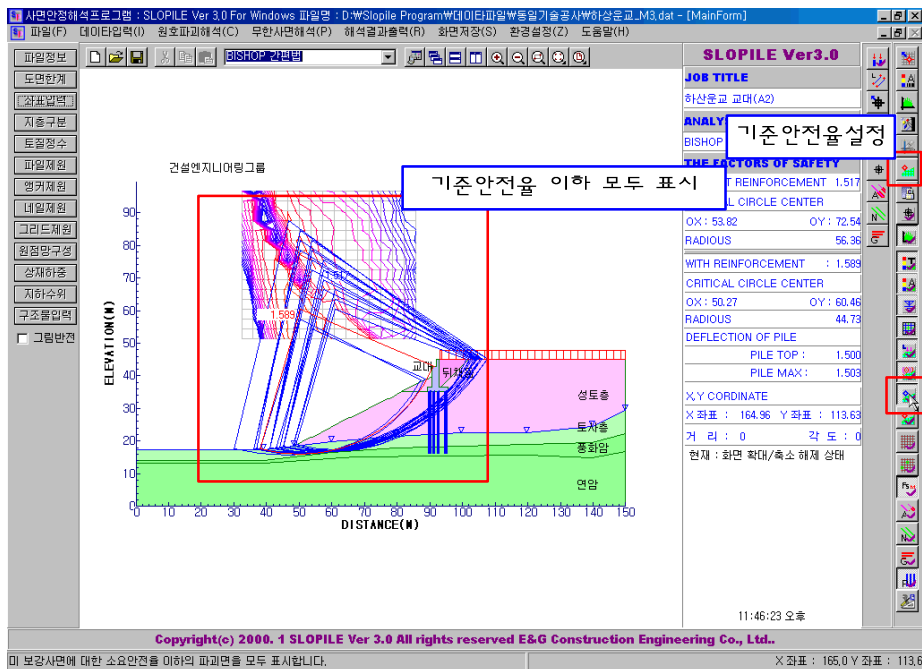
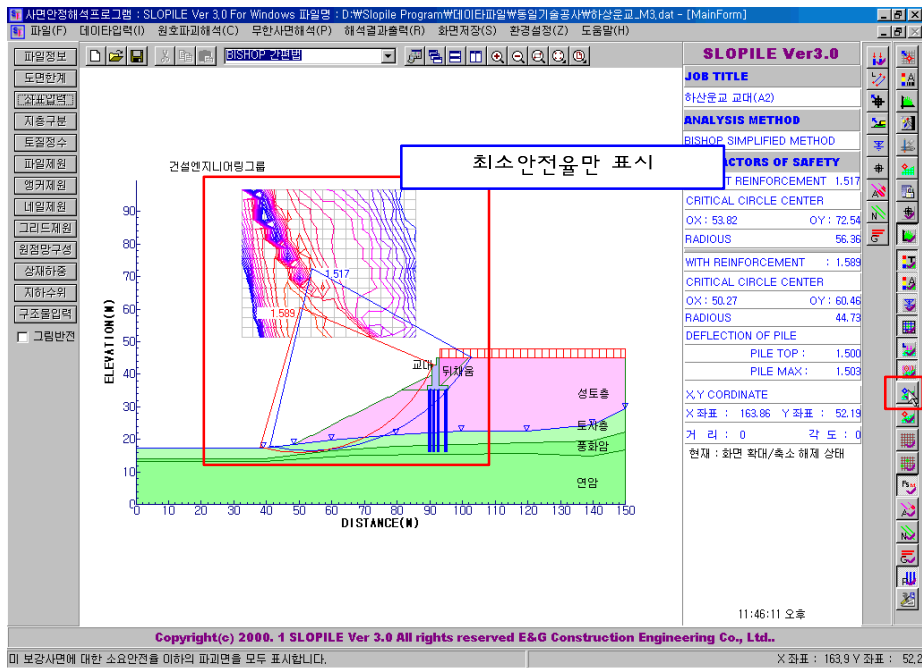
14) 상재하중



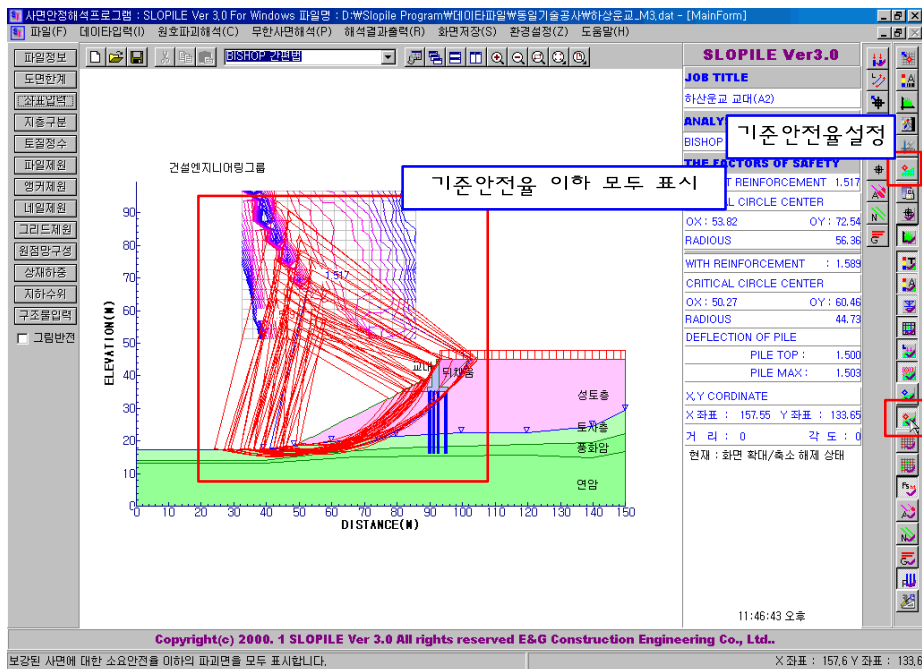
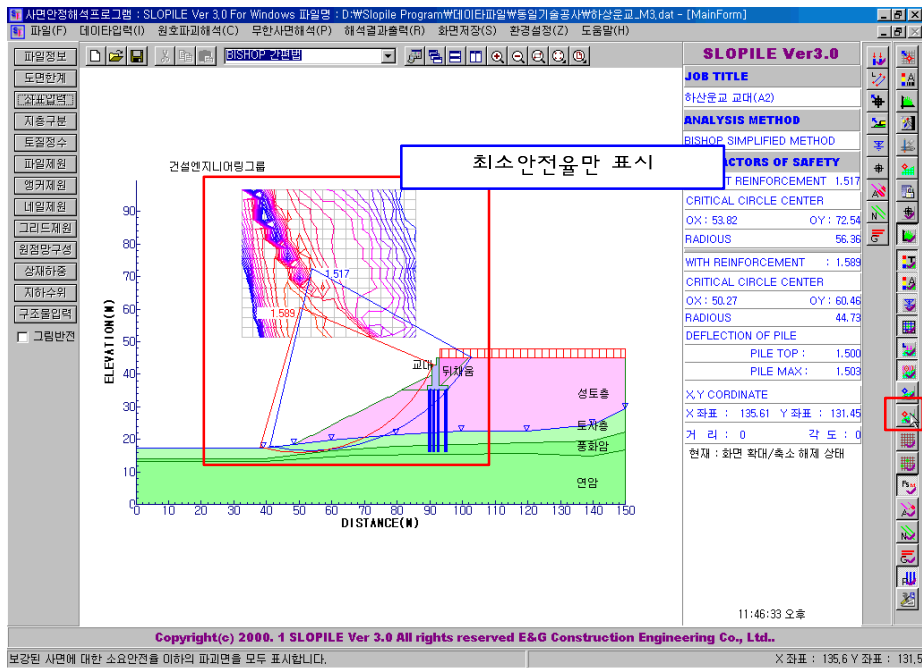
15) 안전율분포현황



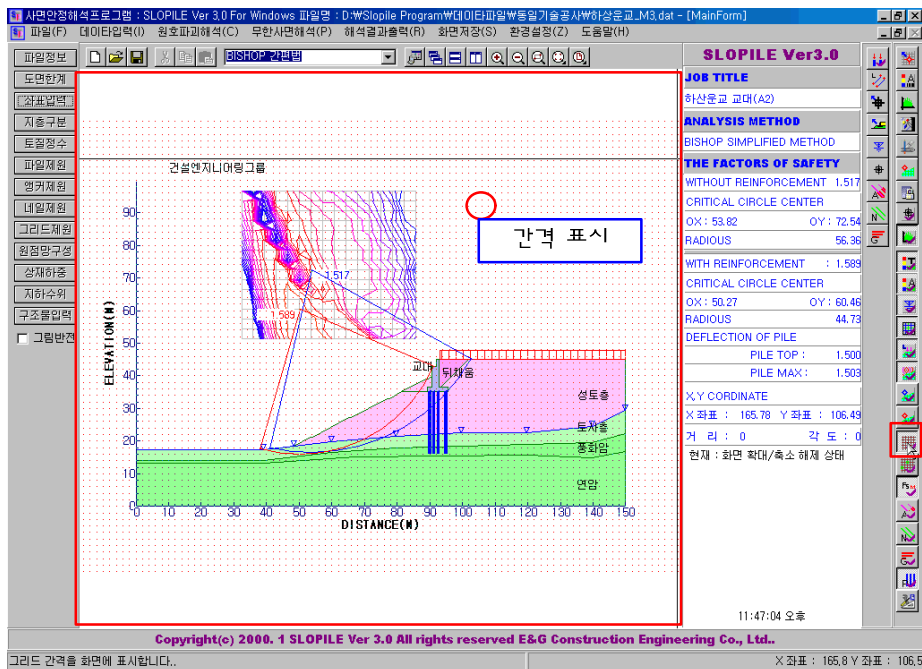
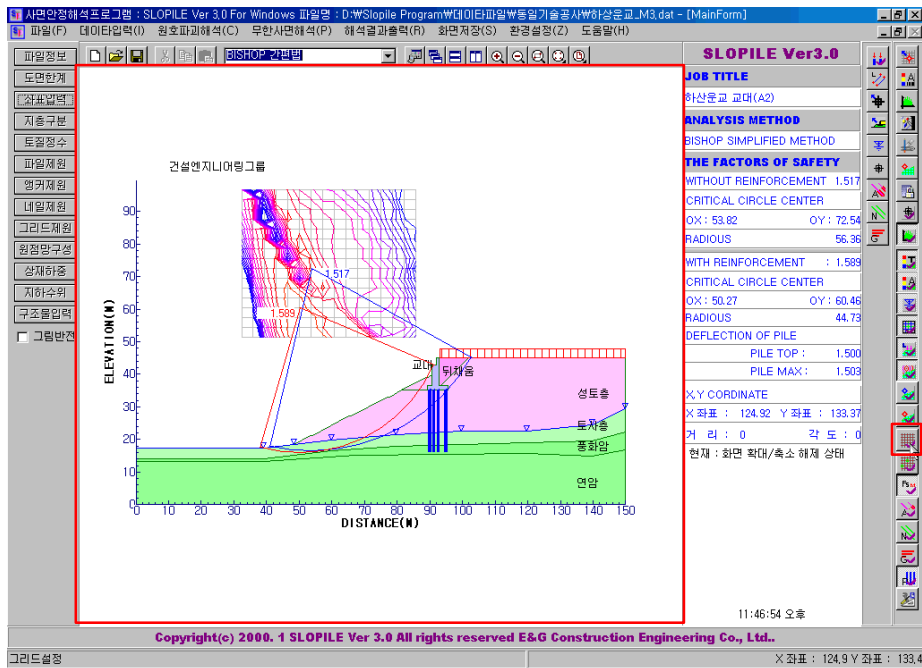
16) 무보강시 사면안전을 표시



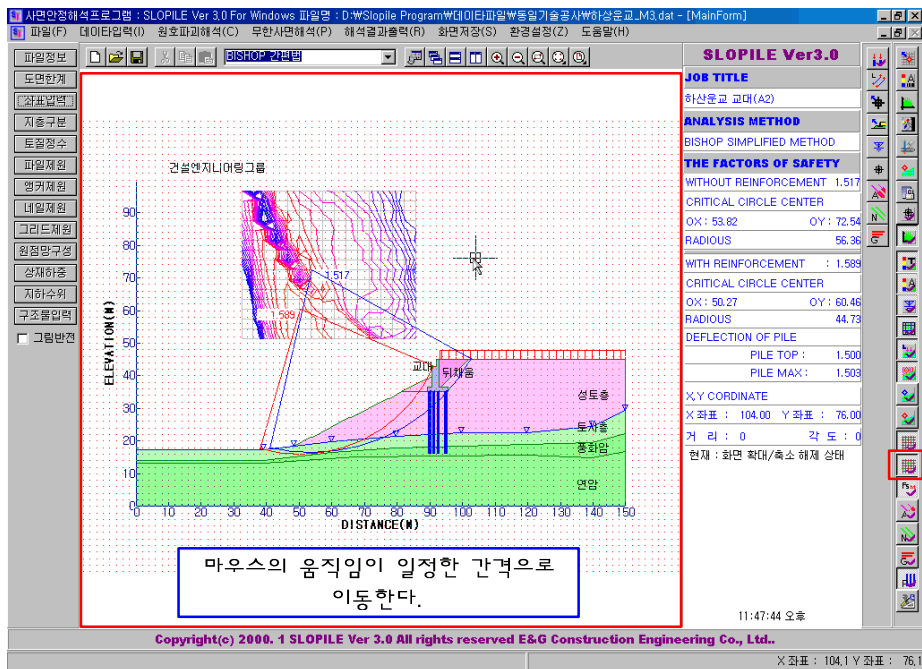
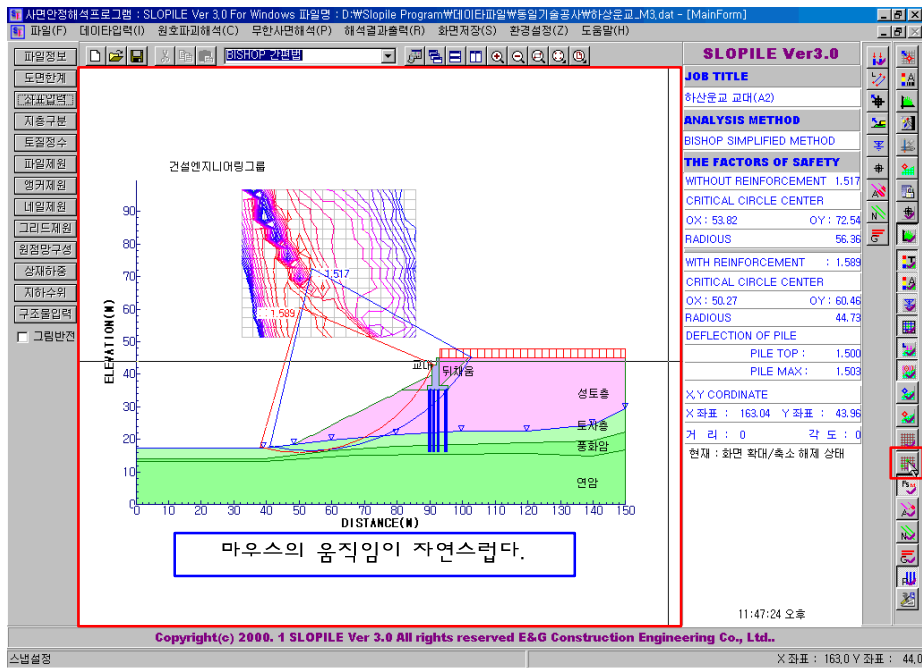
17) 보강시 사면안전을 표시



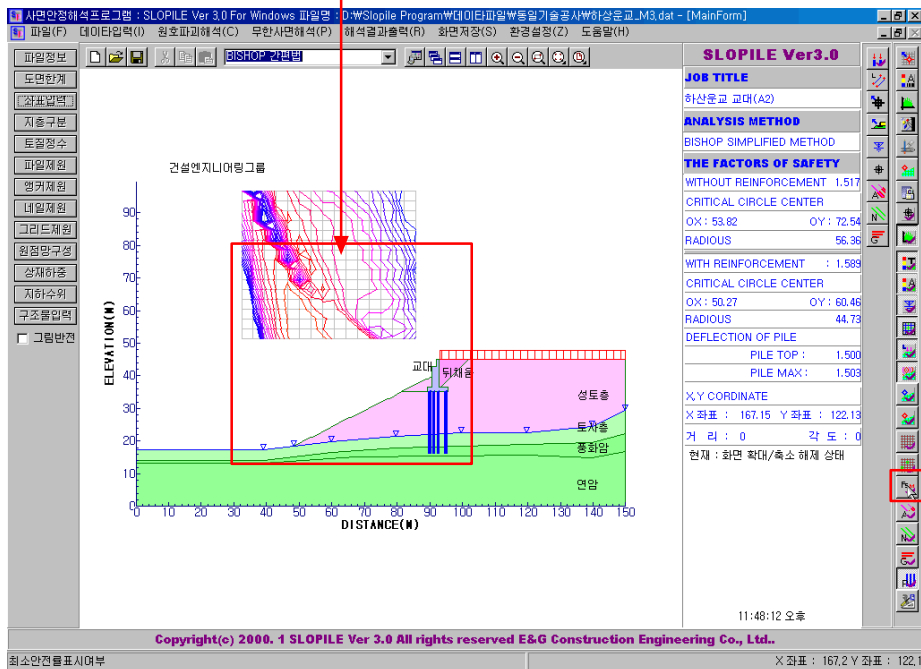
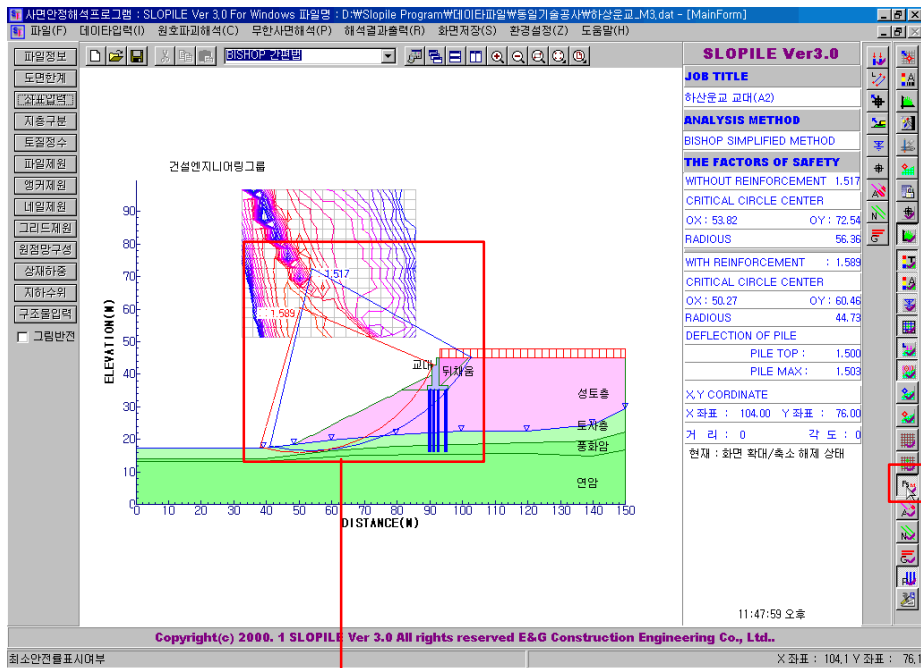
18) 작업화면 그리드



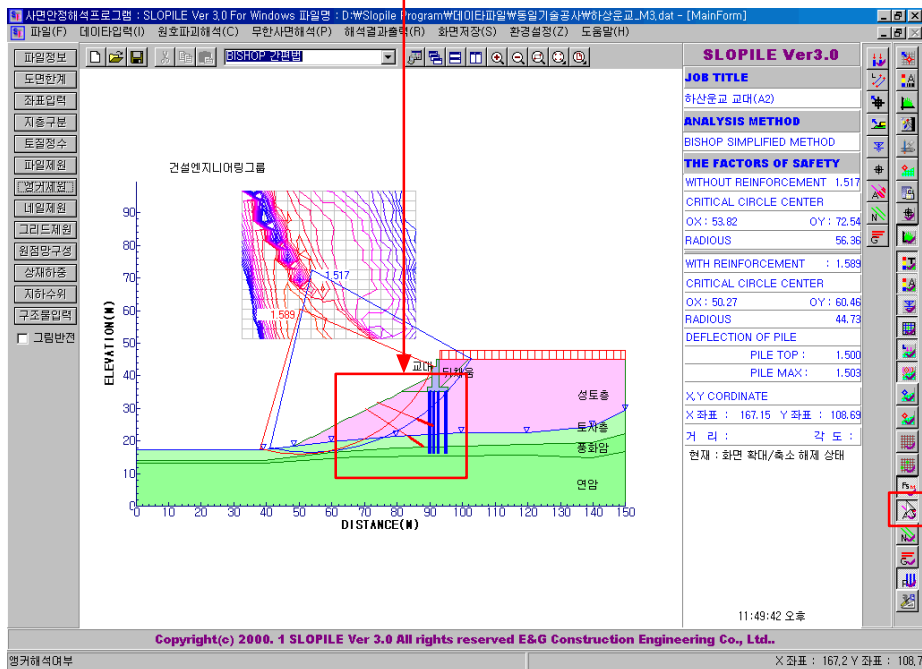
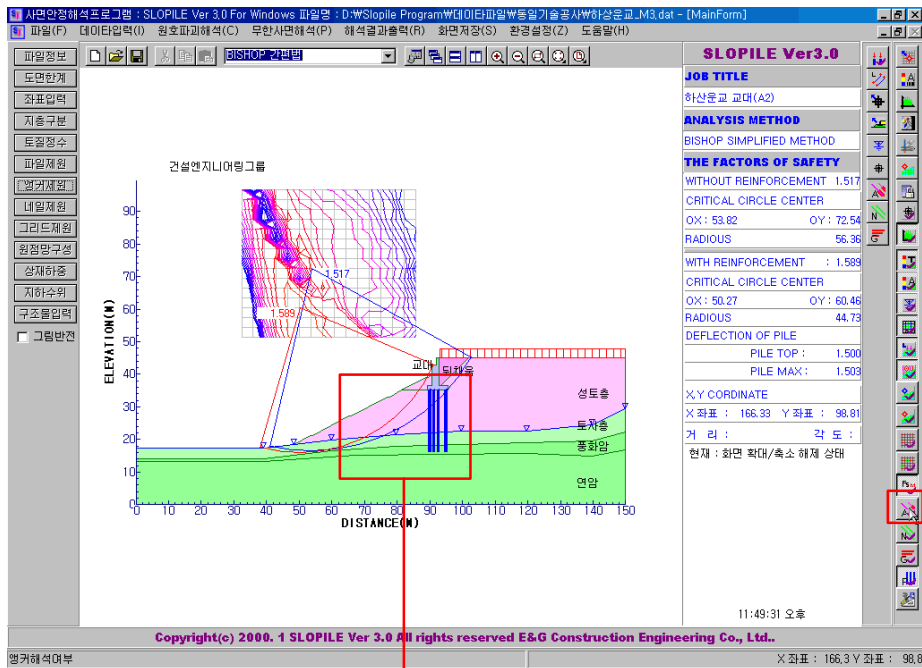
19) 작업화면 스냅



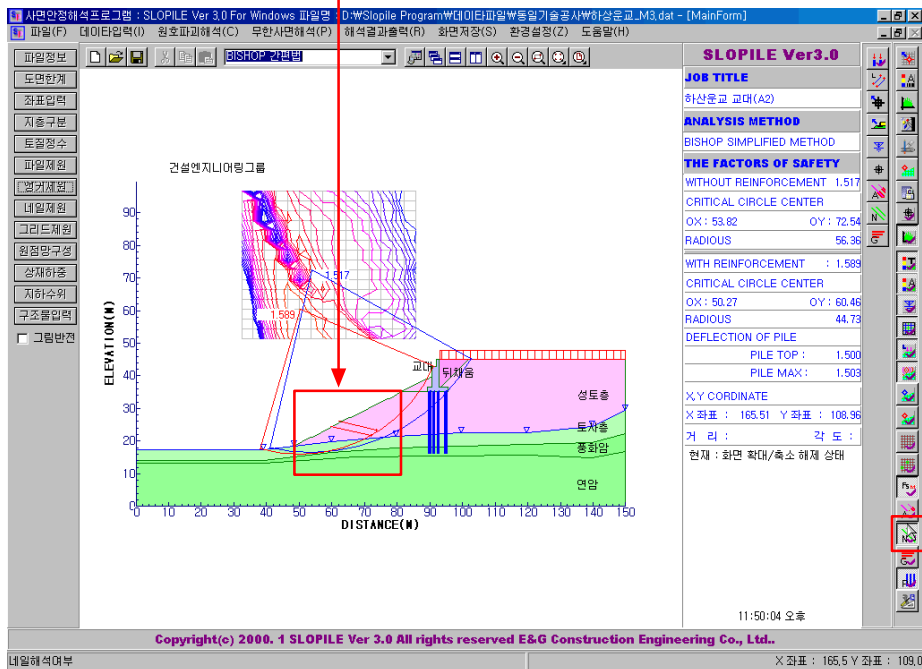
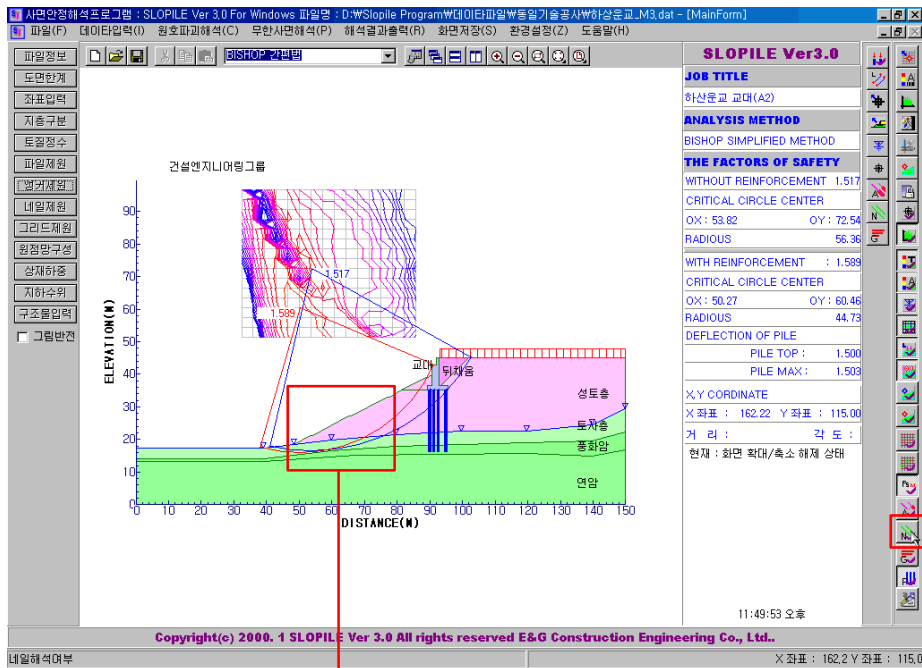
20) 최소 안전율



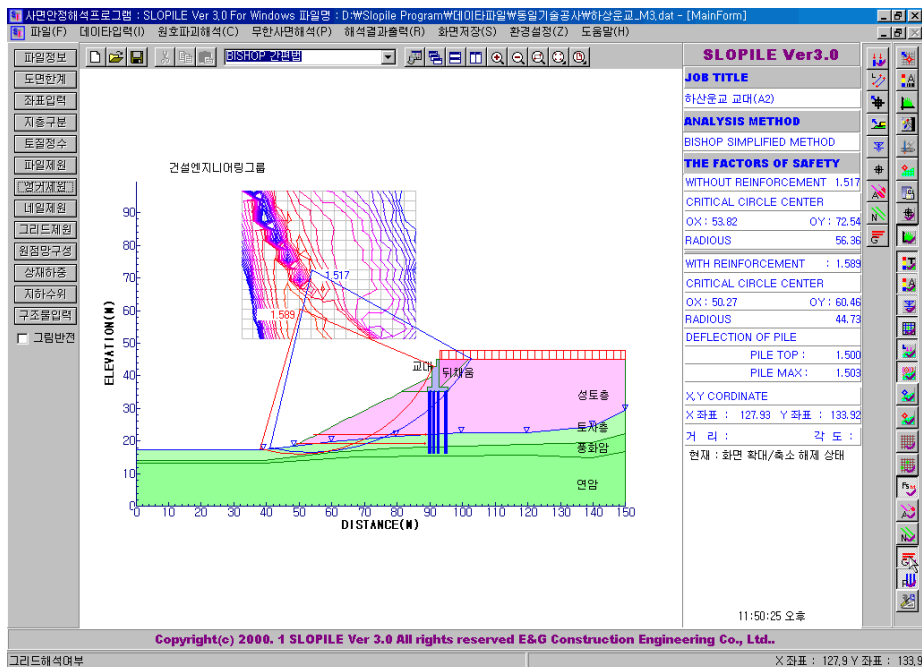
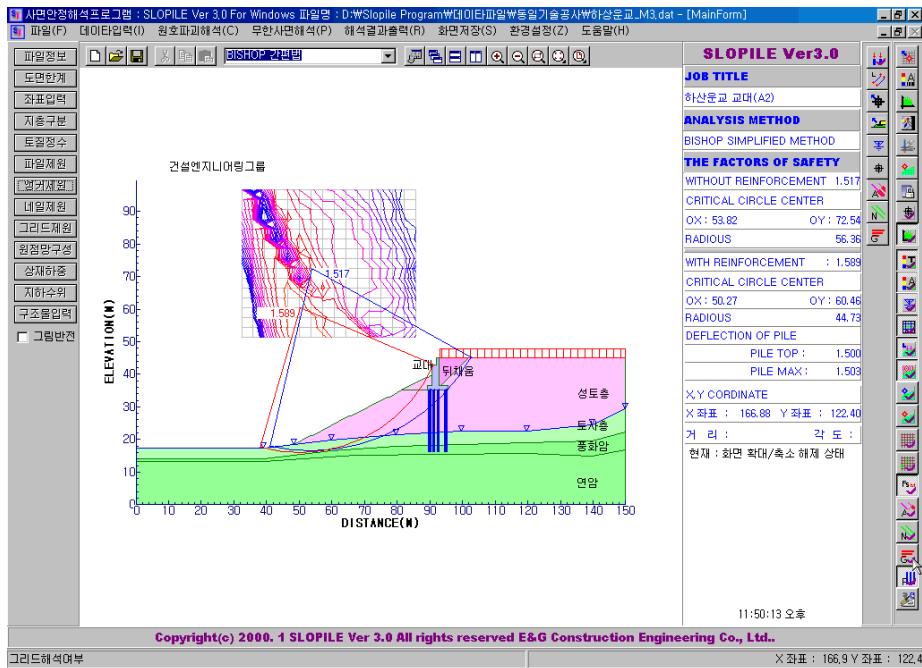
21) 앵커 해석여부



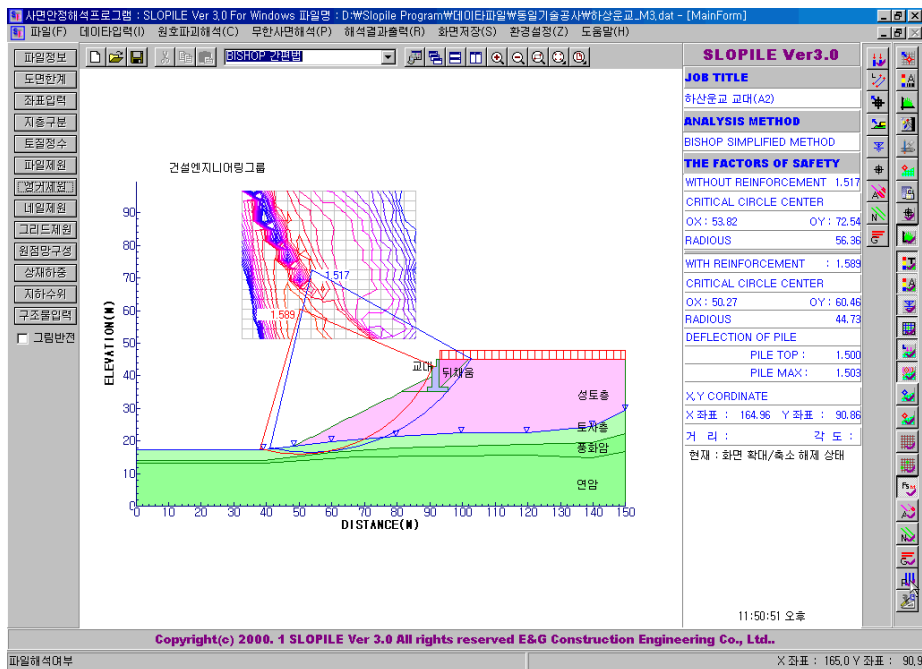
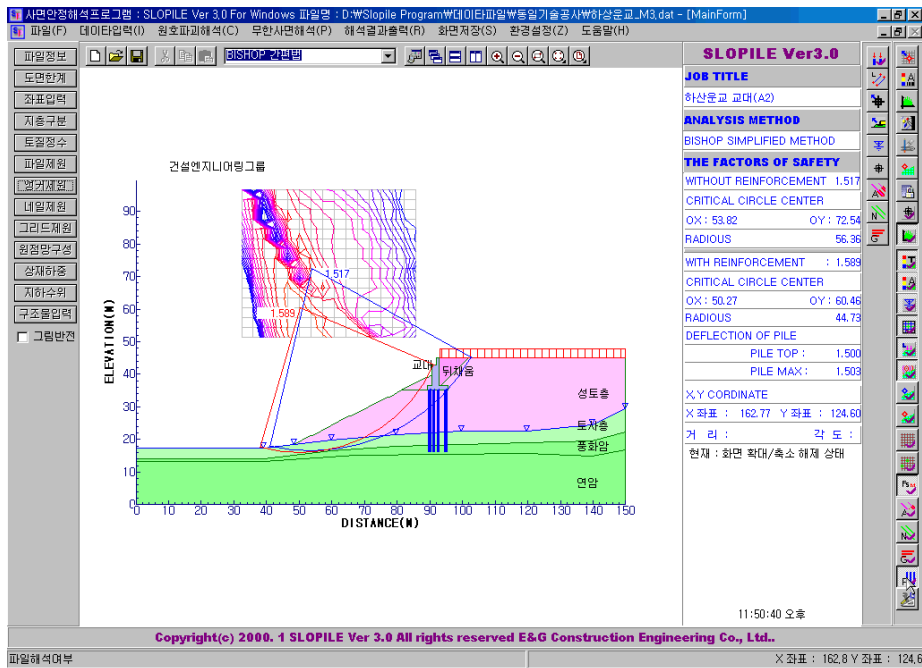
22) 네일 해석여부



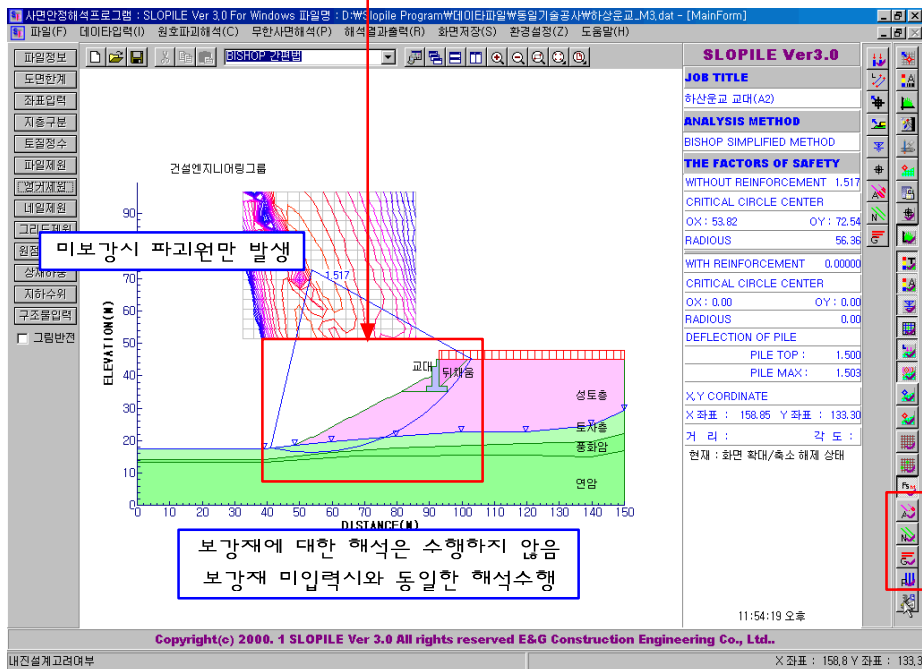
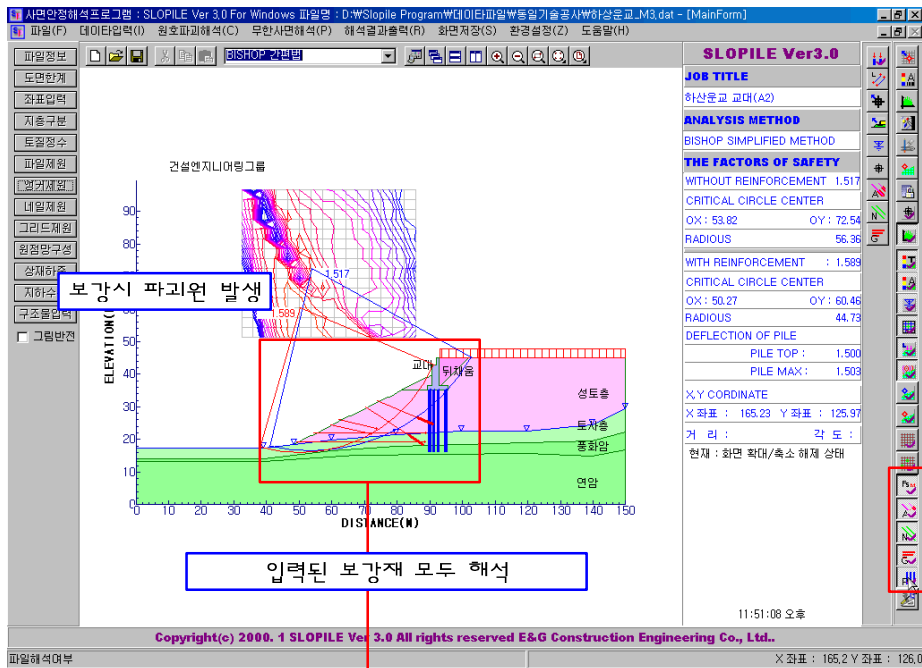
23) 그리드 해석여부



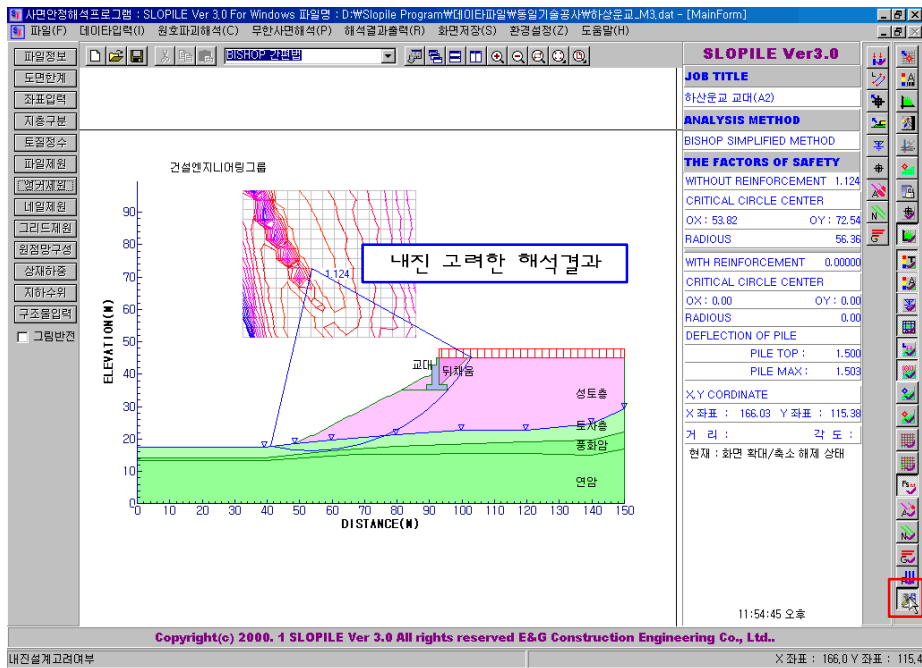
24) 파일 해석여부



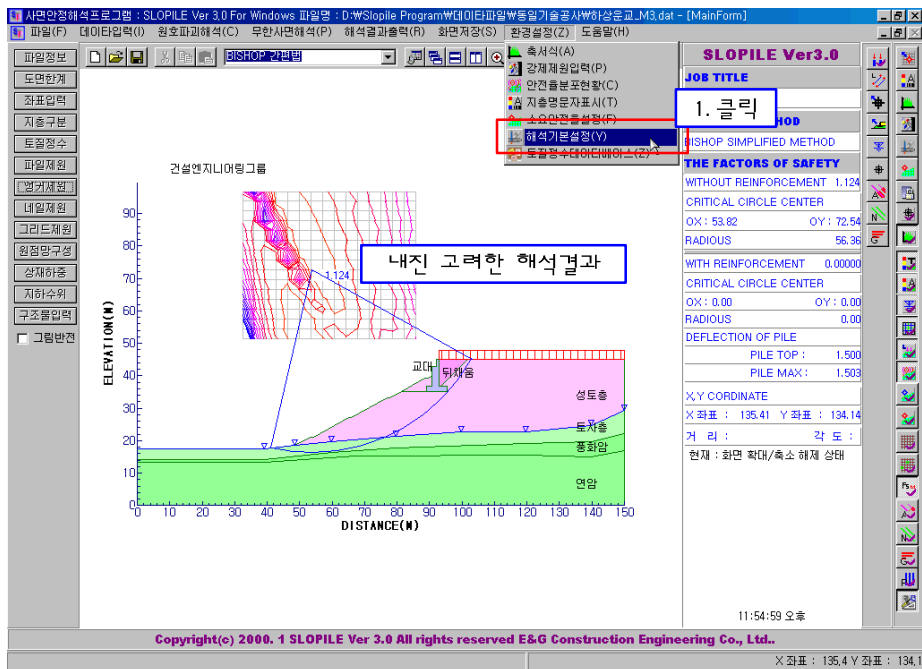
25) 보강재 모두 해석여부



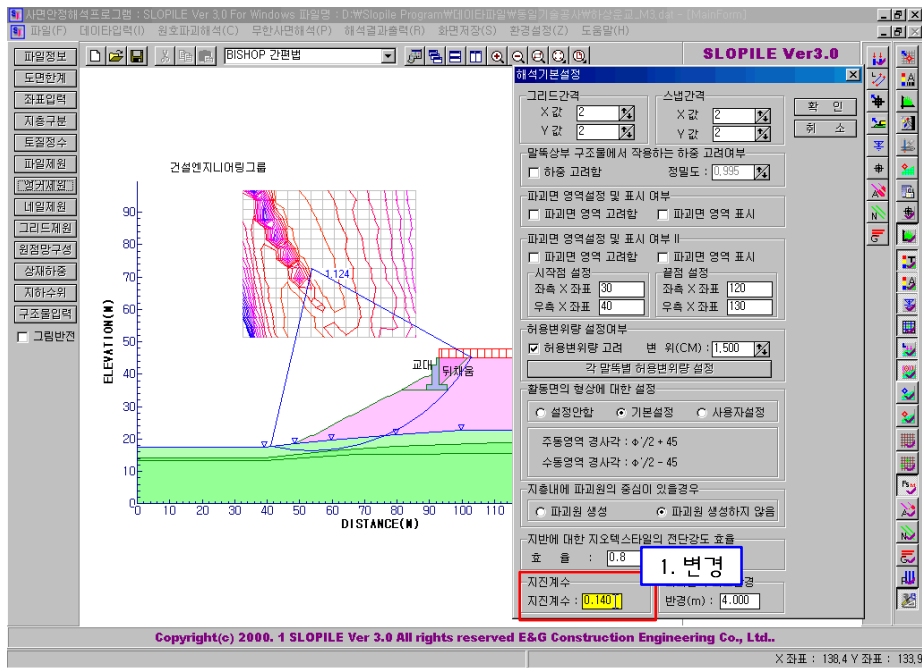
26) 내진해석여부



지진계수 설정을 위해 환경설정메뉴에서 해석기본설정 선택



필요시 지진계수 수정



지진계수 적용하기 위해 확인버튼을 클릭하여 대화상자 종료

